

# Phthalates

## 1. Analytical Condition

### YL Phthalate Analyzer

Sample : EPA phthalate esters mix

Oven : 80 °C(0.5min) -> 20 °C/min -> 270 °C(10min)

Column : DB-5MS (30 m \* 0.25 mm \* 0.25 μm)

Carrier gas : He, 1 mL/min (Split ratio 10:1)

Injector : Capillary 280 °C

Injection Volume : 1 mL

Detector : MSD

Ion source : 250 °C

Transfer line : 290 °C

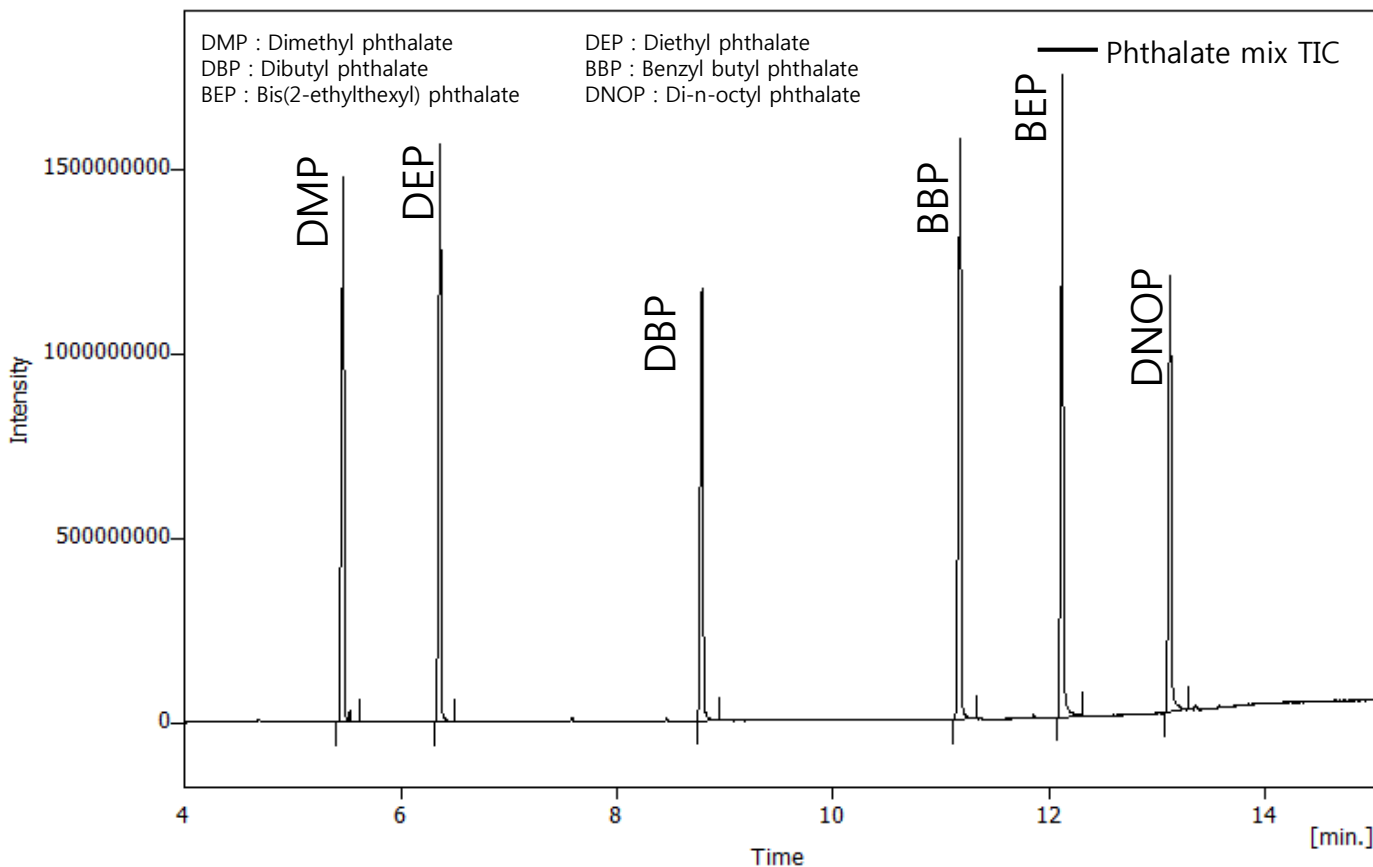
Emission 100 mA, EM Gain 100000

Start time 4 min

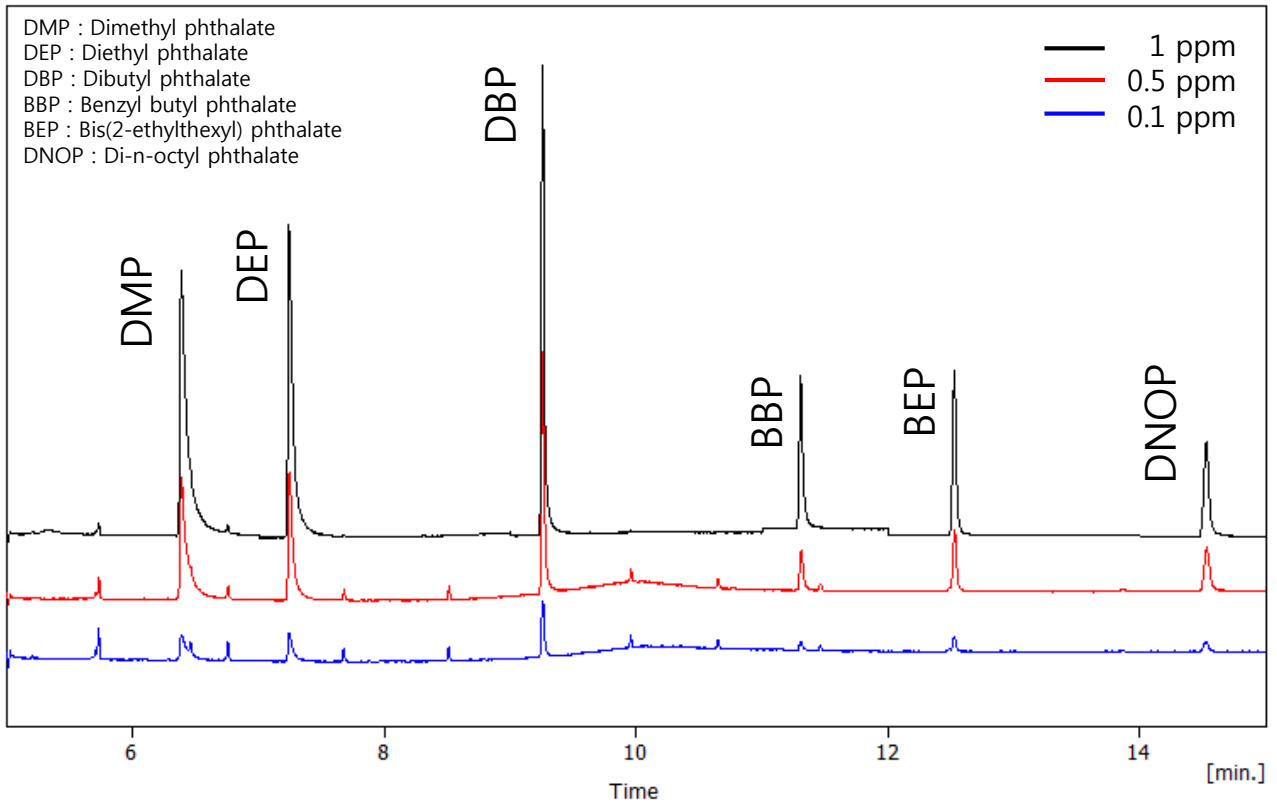
Scan rage 50 - 400 amu

SIM List : 149, 163 amu

## 2. TIC (Scan Mode)



### 3. TIC (SIM mode)



### 4. Spectra

