

Pesticide Mixture (EPA 608 Method)

1. Analytical Condition

YL Residual Pesticide Analyzer (with GC/MS)

Oven : 80 °C(2min) -> 10 °C/min -> 280 °C(5min)

Column : DB-5MS (30 m * 0.25 mm * 0.25 μm)

Carrier gas : He, 1 mL/min (Split ratio 10:1)

Injector : Capillary 280 °C

Injection Volume : 1 mL

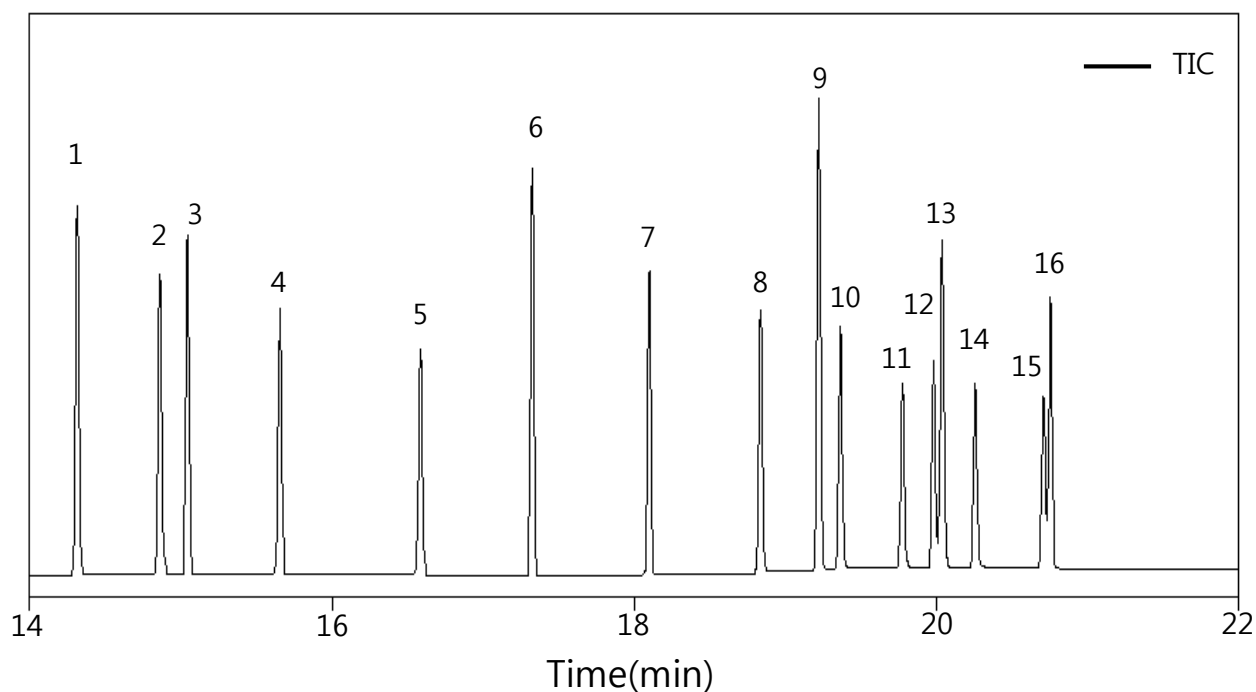
Detector : MSD (Scan & SIM mode)

Ion source : 230 °C

Transfer line : 280 °C

Start time 3 min

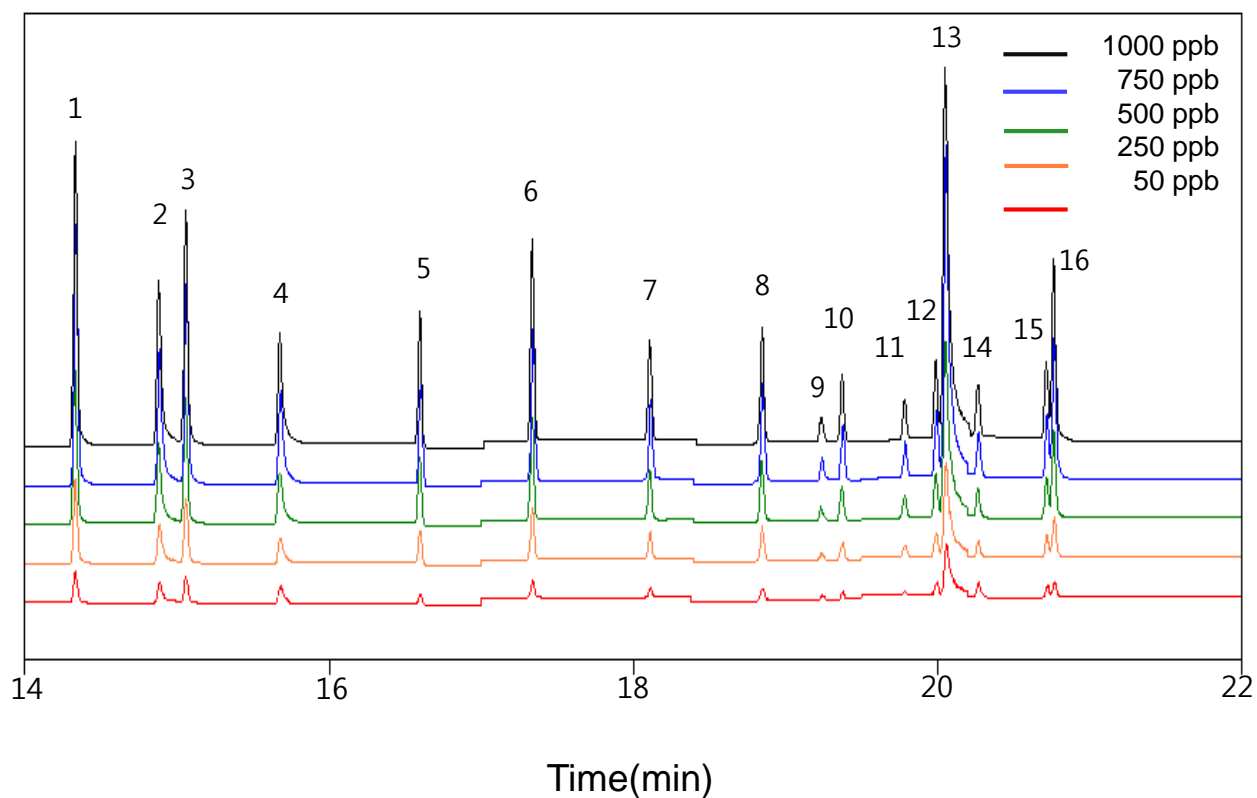
2. TIC (Scan mode)



| | | | |
|----------|------------------------|------------------|------------------------|
| 1. α-BHC | 5. Heptachlor | 9. p,p'-DDE | 13. 4,4'-DDD |
| 2. γ-BHC | 6. Aldrin | 10. Dieldrin | 14. Endrin aldehyde |
| 3. β-BHC | 7. Heptachlore epoxide | 11. Endrin | 15. Endosulfan sulfate |
| 4. δ-BHC | 8. α-Endosulfan | 12. β-Endosulfan | 16. 4,4'-DDT |



3. TIC (SIM mode)



| | | | |
|------------------|-------------------------|-------------------------|------------------------|
| 1. α -BHC | 5. Heptachlor | 9. p,p'-DDE | 13. 4,4'-DDD |
| 2. γ -BHC | 6. Aldrin | 10. Dieldrin | 14. Endrin aldehyde |
| 3. β -BHC | 7. Heptachlore epoxide | 11. Endrin | 15. Endosulfan sulfate |
| 4. δ -BHC | 8. α -Endosulfan | 12. β -Endosulfan | 16. 4,4'-DDT |

4. Spectra

